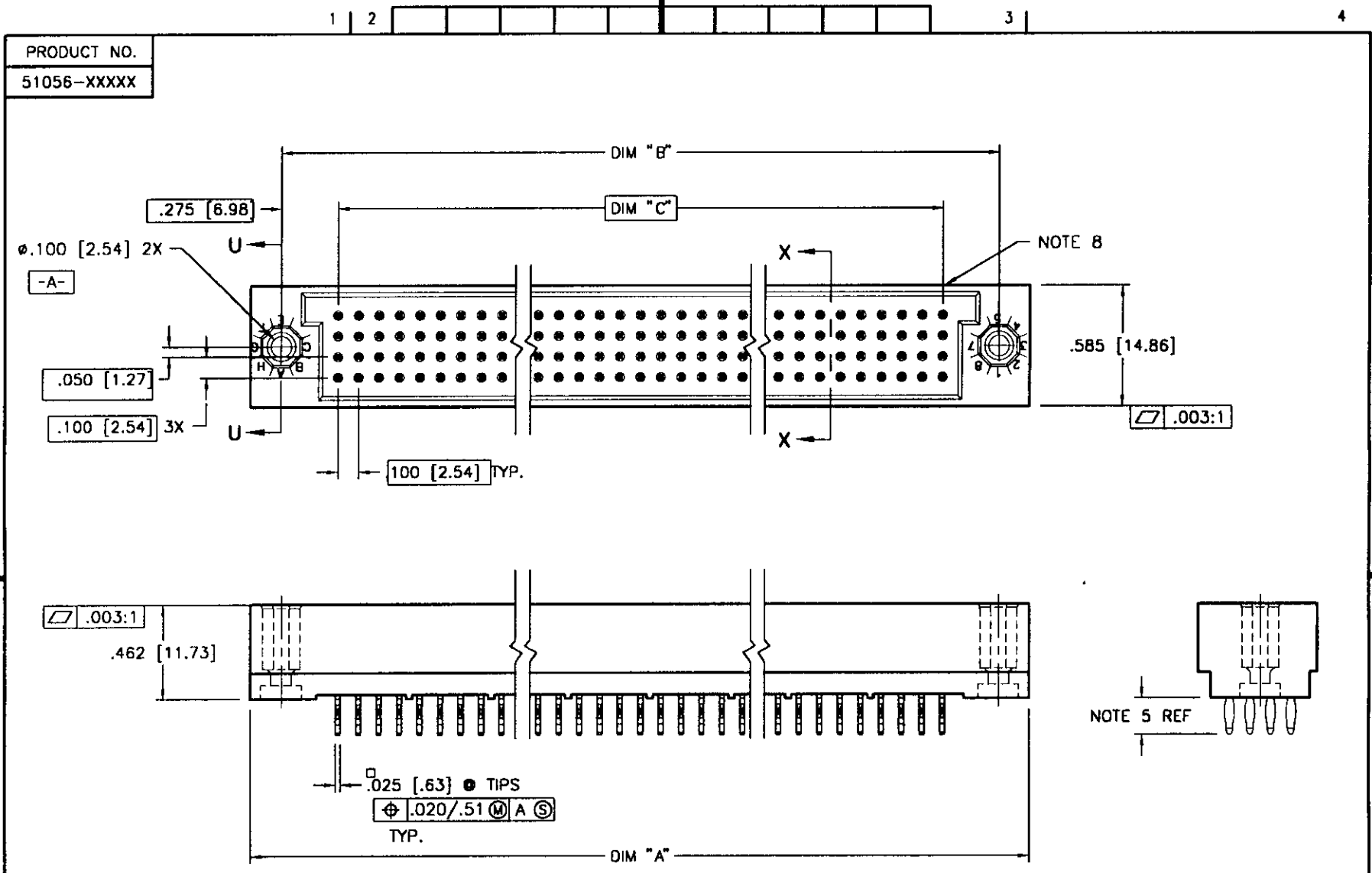


Tous droits strictement réservés. Reproduction ou communication a des tiers interdite sous quelque forme que ce soit sans autorisation écrite du propriétaire. Propriete de ©BERG ELECTRONICS. Droits de reproduction BERG ELECTRONICS INC.

All rights strictly reserved. Reproduction or issue to third parties in any form whatever is not permitted without written authority from the proprietor. Property of ©BERG ELECTRONICS Copyright BERG ELECTRONICS INC.

BERG
ELECTRONICS



PRODUCT NO.
51056-XXXXX

Ø.100 [2.54] 2X
-A-
.050 [1.27]
.100 [2.54] 3X

.003:1
.462 [11.73]

.025 [.63] TIPS
Φ .020/.51 (M) A S
TYP.

.003:1

NOTE 5 REF

mat'l. code				tolerances unless otherwise specified			CUSTOMER COPY		BERG ELECTRONICS		
NOTE 3									title		
ltr	ecn no	dr	date	linear	.XX ±.01 / X ±.3		projection		4 ROW, 0 GUIDE BELLCORE HEADER		
A	V61407	MSC	9/24/96		.XXX ±.005 / XXX ±.13		INCH/MM		product family HPC		
				angles	.XXX ±.0020 / XXX ±.051		scale		code		
					0° ± 2'		1.5:1		-		
				dr	M.CLOUSER	9/24/96			sheet		
				engr	S.CLARK	9/24/96			1 of 2		
				chr	S.CLARK	9/24/96					
				appd	S.CLARK	9/24/96					
sheet	revision	A	A								
index	sheet	1	2								

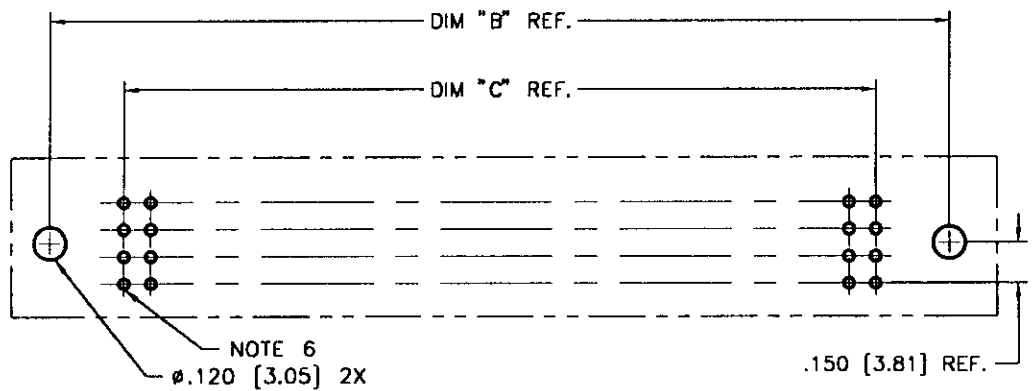
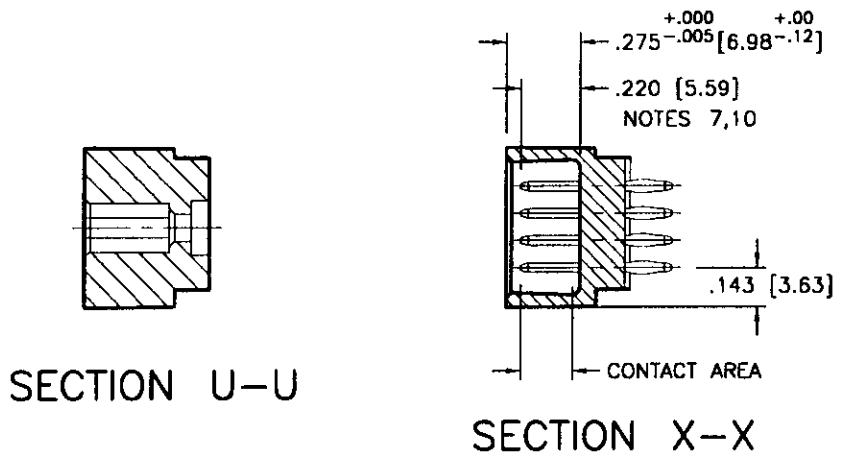
cage code
22526

Tous droits strictement réservés. Reproduction ou communication a des tiers interdite sous quelque forme que ce soit sans autorisation écrite du propriétaire.
 Propriété de ©BERG ELECTRONICS. Droits de reproduction BERG ELECTRONICS INC.

BERG
 ELECTRONICS

All rights strictly reserved. Reproduction or issue to third parties in any form whatever is not permitted without written authority from the proprietor.
 Property of ©BERG ELECTRONICS Copyright BERG ELECTRONICS INC.

PRODUCT NO.	DIM.	LENGTH FORMULAS
51056-XXXXX	DIM "A"	.100/2.54 x NO. OF COLUMNS +.750/19.05
	DIM "B"	.100/2.54 x NO. OF COLUMNS +.450/11.43
	DIM "C"	.100/2.54 x NO. OF COLUMNS -.100/2.54



RECOMMENDED PCB LAYOUT
 (ALL HOLES LOCATED ON .100/2.54 GRID UNLESS OTHERWISE SPECIFIED)

- NOTES:
- PRODUCT NUMBERING CODE:
 51056 - A XXX X
 TAIL LENGTH(NOTE 5)
 NO. OF POSITIONS(NOTE 2)
 PLATING(NOTE 4)
 BASE NUMBER
 - THIS PRODUCT IS CONFIGURED IN SIZES OF 6 thru 80 COLUMNS IN INCREMENTS OF ONE.
 i.e.: 6,7,8,9,.....79,80.
 - HOUSING MATERIAL: GLASS FILLED PPS.
 PIN MATERIAL: PHOS BRONZE
 - PLATING:
 A = 50u" Ni UNDER ALL WITH 30u" Au ON CONTACT AREAS, SnPb ON PCB INTERFACE AND Au FLASH ON ALL OTHER AREAS.
 - TAIL LENGTH OPTIONS:
 A = .177/4.5
 G = .250/6.35
 C = .533/13.54
 D = .733/18.62
 - ø.0453/1.151 DRILLED HOLE PLATED WITH .0003/.007 MIN. SnPb OVER .001/.03 to .003/.08 Cu. PLATING TO ACHIEVE A ø.040±.003/1.02±.08 HOLE.
 - TO ASSURE PROPER INSTALLATION: BERG TOOLING, AS SPECIFIED IN INSTRUCTION MANUAL 155915-001 MUST BE USED. PIN MATING LENGTH WILL BE ±.002/.05 AFTER INSTALLATION.
 - "BERG" NAME, PART NUMBER AND LOT CODE TO APPEAR ON THIS SURFACE PER BUS-12-108.
 - FOR DOCUMENTATION MENU, SEE BERG BUS-01-057.
 - REFERENCE 51059 FOR F.M.L.B. AVAILABLE OPTIONS AND WORKSHEET.

mat'l. code				tolerances unless otherwise specified		CUSTOMER COPY		BERG ELECTRONICS	
ltr	ecn no	dr	date	linear	angles	projection	title		
A				.XX ±.01/X ±.3	0° ± Z'	⊕	4 ROW, 0 GUIDE BELLCORE HEADER		
				.XXX ±.005/XX ±.13		INCH/MM	product family	HPC	code
				.XXXX ±.0020/XXX ±.051		scale	size	dwg no	sheet
						1.5:1	A	51056	2 of
sheet index	revision sheet								

cage code
22526